

**Checkers Industrial Product's Limited Warranty and Limitation of Liability**

Manufacturer warrants that on the date of purchase this product will conform to Manufacturer's specifications for this product (which are available from the Manufacturer upon request), the Manufacturer further warrants that this product is free from defects in materials and workmanship. This Limited Warranty extends for twelve (12) months from the date of purchase. Other warranties may apply, call Manufacturer for details. Manufacturer will, at its discretions, repair or replace any product found by the Manufacturer to be defective and subject to this Limited Warranty.

If within the above warranty timeframe for the specified part (within the aforementioned limitations) Checkers Industrial Product's will repair the item if faulty at no part or labor charge if:

- The fault occurs under normal circumstances during normal use and
- The fault is found to be caused by defective or faulty materials or workmanship

The warranty does not cover transport costs and in-transit insurance costs to and from:  
Checkers

If the product is to be returned, it should whenever possible, be returned in its original carton, or alternatively in suitable packaging so as to prevent damage to the product. Checkers will not accept responsibility for damage transit damage to the item.

Return for warranty repairs must, prior to shipping from the customer, be authorized by Checkers (Phone 800-438-9336) and must reference the warranty repair number issued (RMA), and also be shipped to the authorized warranty location:

**DAMAGE TO PARTS OR PRODUCTS RESULTING FROM TAMPERING, ACCIDENT, ABUSE, MISUSE, NEGLIGENCE, UNAPPROVED MODIFICATIONS, FIRE OR OTHER HAZARD; IMPROPER INSTALLATION OR OPERATION; OR NOT BEING MAINTAINED IN ACCORDANCE WITH THE MAINTENANCE PROCEDURES SET FORTH IN MANUFACTURER'S INSTALLATION AND OPERATING INSTRUCTIONS Voids THIS LIMITED WARRANTY.**

**ORAL STATEMENTS OR REPRESENTATIONS ABOUT THE PRODUCT WHICH MAY HAVE BEEN MADE BY SALESPEOPLE, DEALERS, AGENTS OR OTHER MANUFACTURER'S REPRESENTATIVES DO NOT CONSTITUTE WARRANTIES. THIS LIMITED WARRANTY MAY NOT BE AMENDED, MODIFIED, OR ENLARGED EXCEPT BY A WRITTEN AGREEMENT SIGNED BY AN AUTHORIZED OFFICIAL OF THE MANUFACTURER WHICH EXPRESSLY REFERS TO THIS LIMITED WARRANTY.**

**Exclusion of Other Warranties:**

MANUFACTURER MAKES NO OTHER WARRANTIES, EXPRESS OR IMPLIED. THE IMPLIED WARRANTIES FOR MERCHANTABILITY OR FITNESS FOR A PARTICULAR PURPOSE ARE HEREBY EXCLUDED AND SHALL NOT APPLY TO THE PRODUCT. BUYER'S SOLE AND EXCLUSIVE REMEDY IN CONTRACT, TORT, OR UNDER ANY OTHER THEORY AGAINST MANUFACTURER REGARDING THE PRODUCT AND ITS USE SHALL BE THE REPLACEMENT OR REPAIR OF THE PRODUCT AS DESCRIBED ABOVE.

**Limitation of Liability:**

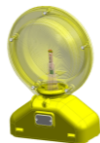
IN THE EVENT OF LIABILITY FOR DAMAGES ARISING OUT OF THIS LIMITED WARRANTY OR ANY OTHER CLAIM RELATED TO THE MANUFACTURER'S PRODUCTS, MANUFACTURER'S LIABILITY FOR DAMAGES SHALL BE LIMITED TO THE AMOUNT PAID FOR THE PRODUCT AT THE TIME OF THE ORIGINAL PURCHASE. IN NO EVENT SHALL MANUFACTURER BE LIABLE FOR LOST PROFITS, THE COST OF SUBSTITUTE EQUIPMENT OR LABOR, PROPERTY DAMAGE, OR OTHER SPECIAL, CONSEQUENTIAL, OR INCIDENTAL DAMAGES BASED UPON ANY CLAIM FOR BREACH OF CONTRACT, IMPROPER INSTALLATION, NEGLIGENCE, OR OTHER CLAIM, EVEN IF MANUFACTURER OR A MANUFACTURER'S REPRESENTATIVE HAS BEEN ADVISED OF THE POSSIBILITY OF SUCH DAMAGES. MANUFACTURER SHALL HAVE NO FURTHER OBLIGATION OR LIABILITY WITH RESPECT TO THE PRODUCT OR ITS SALE, OPERATION AND USE, AND MANUFACTURER NEITHER ASSUMES NOR AUTHORIZES THE ASSUMPTION OF ANY OTHER OBLIGATION OR LIABILITY IN CONNECTION WITH SUCH PRODUCT.

This Limited Warranty defines specific legal rights. You may have other legal rights which vary from state to state. Some states do not allow the exclusion or limitation of incidental or consequential damages.

**A/C - Light****B - Light****D - Light**

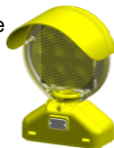
### Part # BR3.AC.XXX

Premium AC  
Barricade Light



### Part # BR3.B.XX

Premium B Type  
Barricade Light



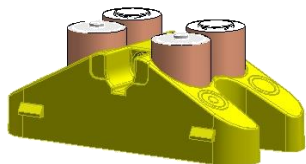
### Part # BR3.D.XXX

Premium D Type  
Barricade Light



#### Battery Installation

- See below the proper orientation of each respective battery. Note improper battery installation can possibly cause damage to the light or the batteries.



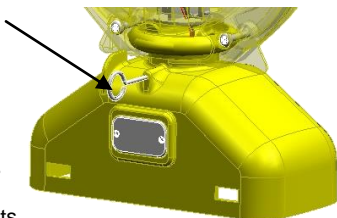
#### Turning the Light On

- Each respective light is turned on by using the push pin supplied in the box. The pin is placed in the position shown right and when pressed inward will change the light into one of 3 modes of operation.

- Light Modes: *Steady – Flashing – Off*

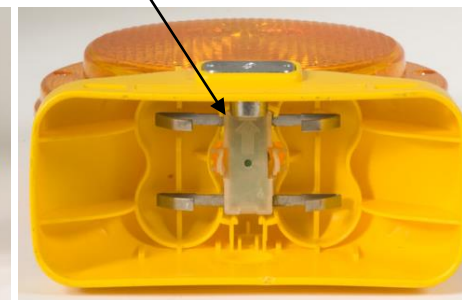
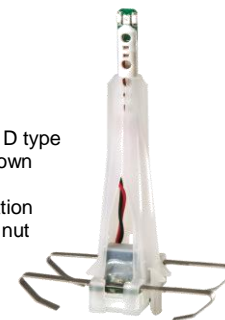
#### Light Specifications

- ITE Certifications
  - Certified to both type A and C requirements
- NCHRP-350 Certifications
  - Certified to all federal D section requirements
- Flash Rate and Intensity (Type A)
  - 1 Flash/Second and > 4 Effective Candelas
- Steady Mode Intensity (Type C)
  - > 2 Candelas
- Battery Life
  - ≥8 Months in Steady Mode and ≥ 12 Months Flashing
- Required Battery Types
  - D-Cell Alkaline, Lantern Battery 6 volt
- Operating Temperatures
  - 20° C to 55° C ( 0° F to 130° F )
- Case Material
  - Lens – UV protected polycarbonate
  - Case – UV protected hi density polypropylene
- Bolt Size & Length
  - ½"-13 by 3.5" or 3.875" lengths available
- Bolt Head Types
  - D, Pyramid and Moon
  - Bolt heads are noted in part number when ordered by the letters D, P, and M.
  - (Note: D type is standard and recommended)
- Overall Dimensions and Weight with Batteries
  - L 7.375" W 3.25" H 10.125" Weight: 2.65 lb. 4 batteries



#### Biscuit Removal and Installation

- The light circuit used on the Premium A/C and D type barricade lights utilize a replaceable biscuit shown right.
- Below are two pictures showing proper installation and removal of biscuit. Note arrow pointing to nut plate for proper orientation of biscuit when installed correctly.



#### Replacement Parts

#	Description	Part Number
A	Amber Lens	Z503.09A
B	Bolt D-Bolt 3.5" Length	Z503.D3
	D-Bolt 3.875" Length	Z503.D4
C	Wrench for D-Bolt	Z503.017D
F	Nut Plate	Z503.006
G	Push Pin	Z503.013
H	Lens Screws	Z503.008
I	Biscuit Circuit	04.BR3.CKT
J		