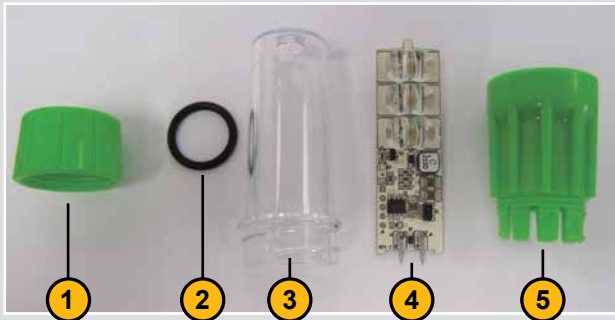


# NEW ROCKET™ II LED WHIP LIGHTS

Patent Pending

From the Experts in Industrial Safety

## INSTRUCTIONS FOR ADAPTABLE 2, 4, AND 6 LED LIGHTS



### PARTS LIST

1. Lower Threaded Base
2. O-Ring
3. Clear Lens
4. Circuit Board
5. Upper Threaded Base



## INSTALLATION INSTRUCTIONS



1. Remove lower base from upper base
2. Remove O-ring from the lower base
3. Slide threaded lower base over the lamp socket with the female threads up
4. Slide the O-ring over the lamp socket
5. Push the O-ring to the bottom of the lower base
6. Place the upper base and housing on the lamp socket. Turn the housing without pushing down on the lamp socket until the upper housing falls into place on the lamp socket.
7. Thread the lower base to the upper base

Ver: RCKT2INST-3/14

**CHECKERS**<sup>®</sup>  
INDUSTRIAL SAFETY PRODUCTS

620 COMPTON ST • BROOMFIELD, COLORADO, USA 80020  
800-438-9336 • [www.checkersindustrial.com](http://www.checkersindustrial.com)

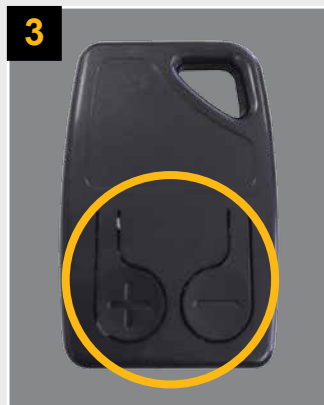
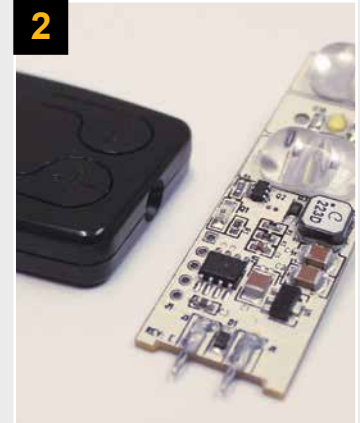
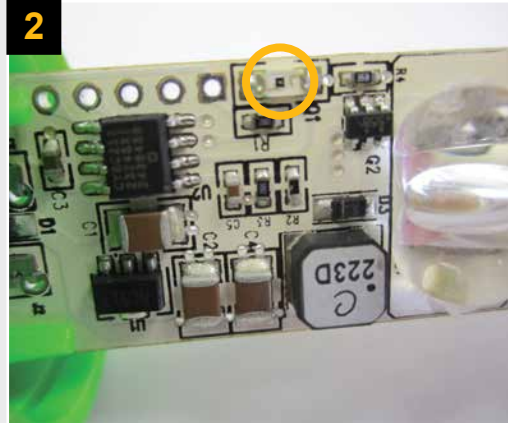


# NEW ROCKET™ II LED WHIP LIGHTS

Patent Pending

From the Experts in Industrial Safety

## PROGRAMMING INSTRUCTIONS



1. Remove the clear lens from the base by turning counterclockwise
2. With the light powered on, hold the remote close to the sensor. You may need to block the light emitting from the LED's to enhance the communication from the remote to the light.
3. Use the + and - buttons on the remote to select the flash pattern desired (see chart)
4. After the flash pattern has been selected, turn the clear lens clockwise on to the upper base

